



Welcome to PBSC LTD

Our worldwide client Portfolio

Abbott Murex
Actavis
Astra Zeneca
Bristol-Myers Squibb
Eli Lilly
GlaxoSmithKline
Hoffmann-La Roche
Intel
Intervet
Johnson & Johnson
Merck Sharp & Dohme
MRC
NHS Hospitals
Novartis
Patheon
Pfizer
Sanofi Aventis
Schering Plough
Wyeth

PBSC was established in 1987, as a high quality supplier of architectural components for clean room environments.

The search for innovative design, an eye for detail and advanced manufacturing techniques have seen **PBSC** gain a deserved reputation today as the premier supplier of what are arguably the best components in the world for clean controlled environments.

Cleanroom Product Range

Transfer Hatches
Trolley Hatches
Clean Room Door Sets
Viewing Panels
Emergency Escape Panels
Decontamination Showers
Change Room Equipment

PBSC are the accepted benchmark by which others are measured....



PBSC Clean/Critical Facility Door Systems:



Personnel and
Equipment Access

Sanitary Construction Doors for critical locations



- The PBSC Facility Door system has been the safe choice for facility providers for over 20 years.
- Sanitary design – easy de-contamination
- Choice of sizes
- Choice of constructions
- APR inflatable seal versions



PBSC's robust design ease of decontamination and door seal reliability ensure that in difficult or demanding applications – where safe performance is critical – the PBSC facility door is the proven solution.

An estimated 98% of all PBSC doors are still in service after many years operation.

As a responsible manufacturer PBSC ensure their products can be updated to incorporate new availability of materials and developing facility technology.

Client Assessment

PBSC Clean/Critical Facility Door Systems:



- No visible fixings on fascias.
- Cast Stainless hinges
- Sanitary crevice free construction
- Solid leaf glass doors
- Stainless doors or phenolic resin doors available if required.

Hygienic Construction

PBSC Clean/Critical Facility Door Systems:



**PBSC Critical
Facility Door Range**

Glass door range

**Stainless door
range**

**Phenolic Resin
Doors**

**APR Inflatable
Seal Doors**



Door Construction Options

No Quality Compromise Ensures Reliability



Built to exacting standards:



The PBSC Two-Part – No Visible Fixings Door Frame:

Key Features

No Quality Compromise Ensures Reliability



The PBSC Door seal system:

- Silicone rubber perimeter seal
- No visible fixings
- No contamination trap
- cGMP compliant

Built to exacting standards:

The PBSC Hinge:

solid stainless steel hinge in 304 or 316 stainless steel.

The hinge is purpose built for clean room environments with a robust design, providing low maintenance and clean finish.



Key Features

No Quality Compromise Ensures Reliability



Built to exacting standards:



High Quality Cast Stainless Door Closer Arm:

Key Features

No Quality Compromise Ensures Reliability



Built to exacting standards:



High Quality Crevice free- Ledge free Vision Panels:

Key Features

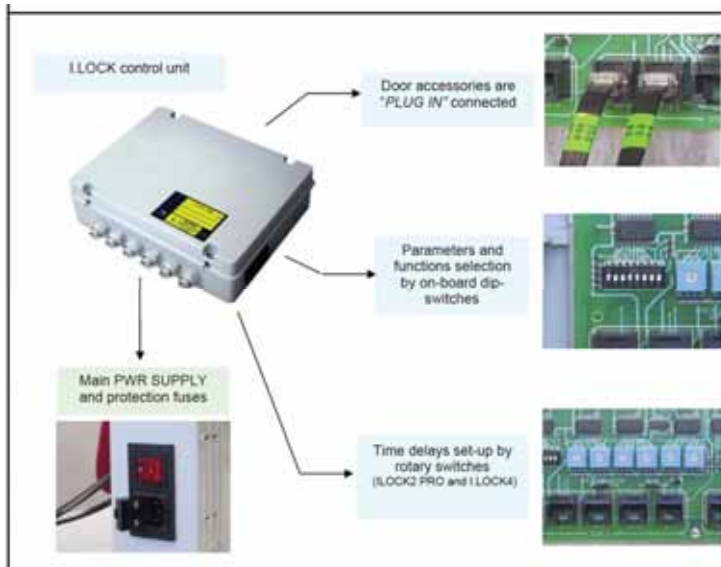
Door Interlocks for Maximum Security:



When Access Control is Critical.... Rely on PBSC:

Facility Security

PBSC Door / Facility Security



- PBSC offer an electronic door interlock system. Powerful "Mag-Locks" are linked to a plug and play control system using RJ45 connections for quick electrical installation on site.

I.LOCK2 PRO (two doors interlock with time delays)

The I.Lock2 "pro version" has the same functions as the basic version but also includes the following:

Doors sequence selection:

- Dressing room (with IR presence detector inside the room).
- Pass-box for unidirectional or bi-directional material loading.
- Pass-box with manual or automatic cycle.

Three independent pre-settable delay times for UV and Fan controls

Times selection by rotary switches on-board.

Time-base selection: seconds or minutes.

Running cycle remote control.

Door Interlock

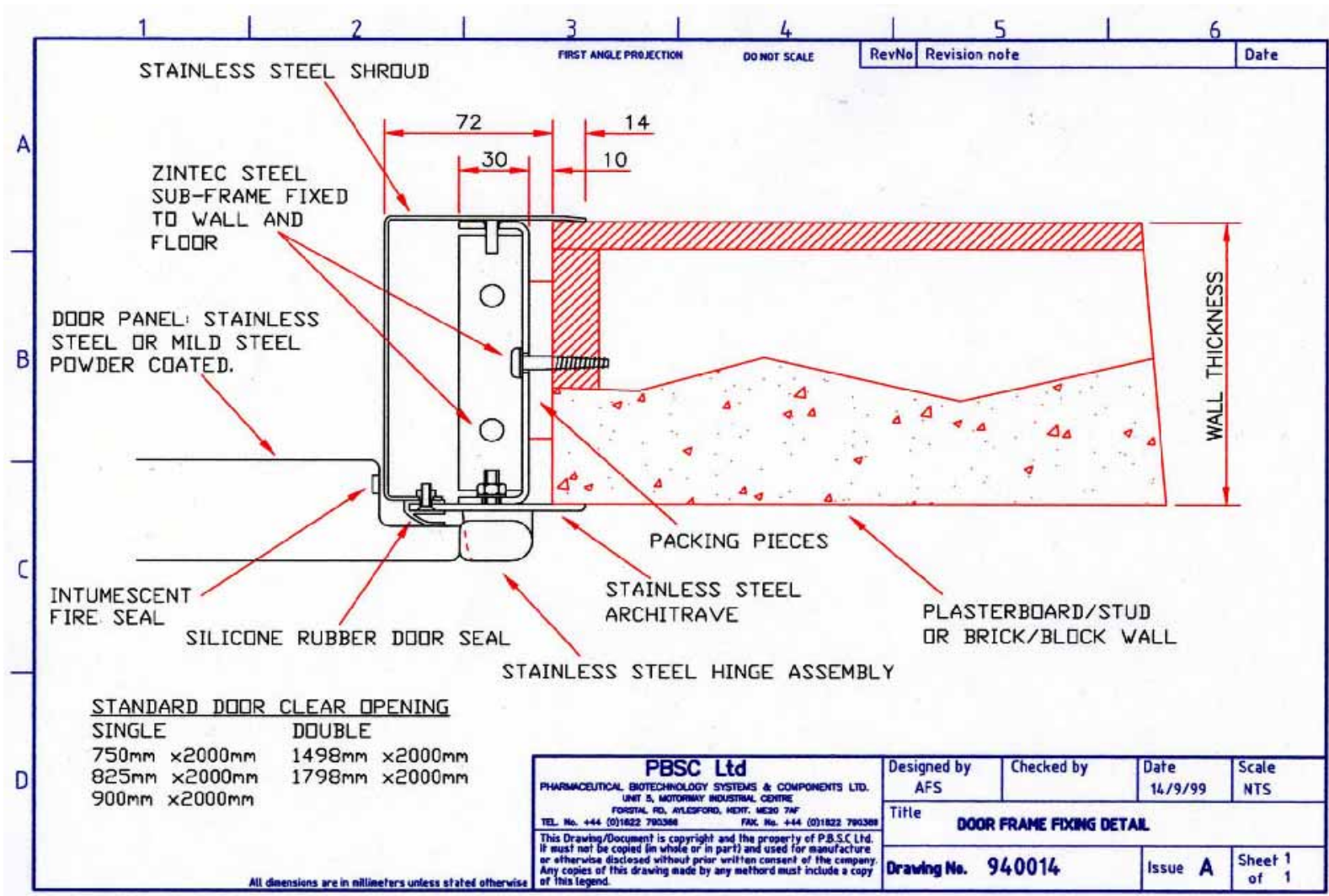
PBSC Facility Door Options & Size Range



| Door Type | Single Leaf | Double Leaf |
|----------------------------|--------------------------------------------------------------------------------------------------------------------------------------------------------------------------------------------------------------------------|--------------------------------------------------------------------------------------------------------------------------------------------------------------------------------------------------------------------------|
| Size Range: | Bespoke sizes to suit application | Bespoke sizes to suit application |
| Construction types: | <ul style="list-style-type: none"> • Phenolic Resin construction • Epoxy Coated Carbon Steel • 304/3b finish Stainless Steel • 316/3b finish Stainless Steel | <ul style="list-style-type: none"> • Phenolic Resin construction • Epoxy Coated Carbon Steel • 304/3b finish Stainless Steel • 316/3b finish Stainless Steel |
| Door Detail: | Stainless Steel fixing free PBSC hinge Stainless Steel fixing free PBSC door closer Pocket free- easy clean Silicone Seal Flush/Crevice Free Vision panels Optional Interlock Optional Vision Panel Blind | Stainless Steel fixing free PBSC hinge Stainless Steel fixing free PBSC door closer Pocket free- easy clean Silicone Seal Flush/Crevice Free Vision panels Optional interlock Optional Vision Panel Blind |
| Shipping Weight | Consult Factory/Agent | Consult Factory/Agent |

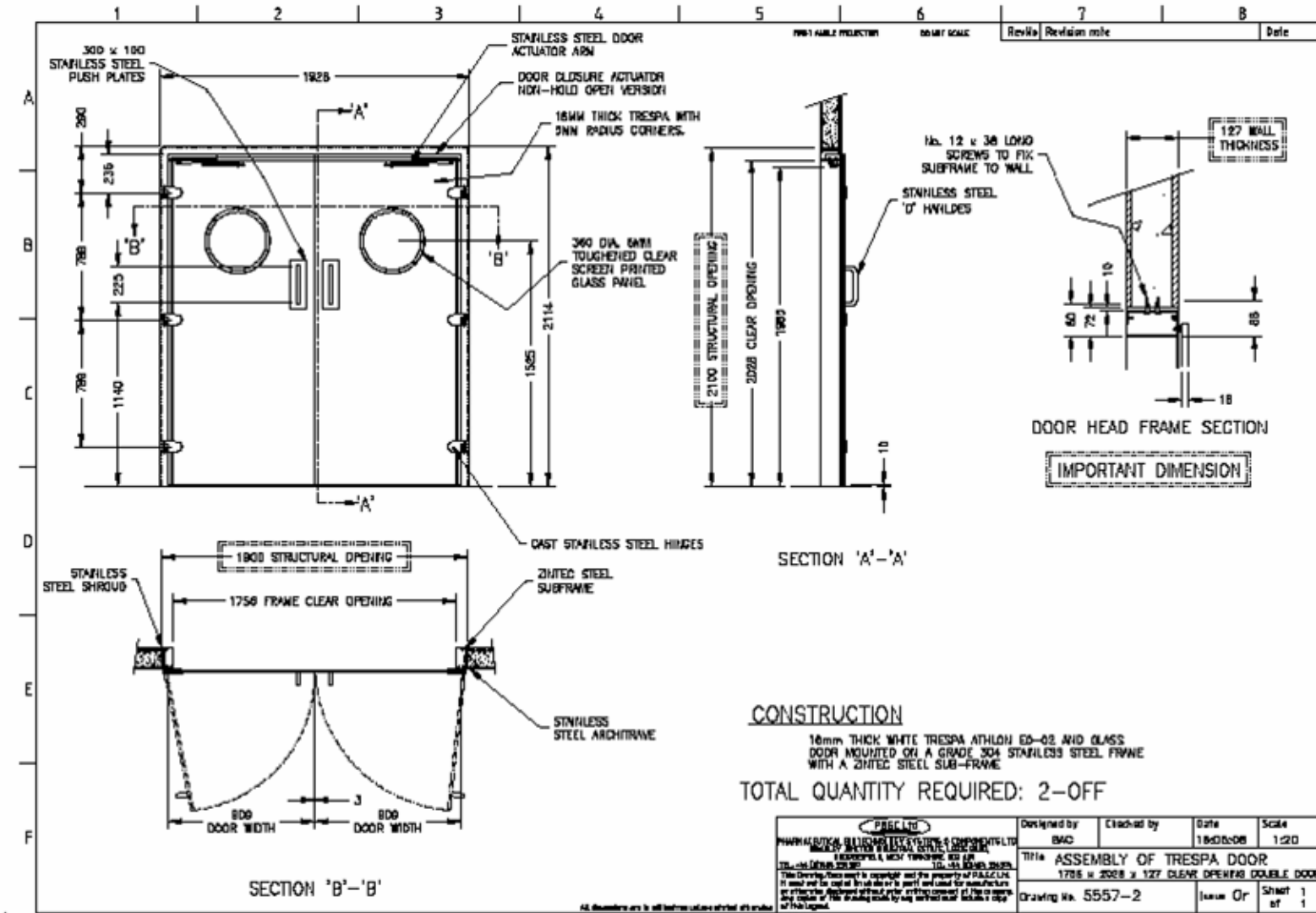
Door Construction

Architectural Detail – Door Facility Interface



Door / Facility Interface

Architectural Detail – Door Facility Interface



Door / Facility Interface

PBSC APR Pressure Resistant Doors



Inflatable Seal Doors

PBSC APR Pressure Resistant Doors



Inflatable Seal Doors

PBSC APR Pressure Resistant Doors



User Benefits of PBSC Inflatable Seal Technology:

- Automated inflate/deflate cycle
 - Push button actuated
- Secure Closed position – Mag lock retained
 - Easy Clean surfaces
 - No Floor Threshold
- Pressure tested at up to 8" WC
- Pressure decay/pressure testing data available against final design

Inflatable Seal Doors

Independently Tested over 60 minute Cycle period

PBSC Facility Door System:



Gallery

PBSC Facility Door System:



Gallery

PBSC Facility Door System:



Gallery

PBSC Facility Door System:



Gallery

PBSC Facility Door System:



Gallery

PBSC Facility Door System:



Customer Options:

- **Epoxy Steel / Phenolic Resin or Stainless constructions**
- **Ledge Free/Crevice Free Vision Panel**
- **Vision Panel Blind**
- **Concealed Door Closer**
- **Electronic / Pushbutton Security Interlocks**
- **APR Inflatable Seal System**

Need More?

Ask the PBSC Technical Team:

UK & Worldwide +44 1484 354 500

USA +1 888 554 5885

www.pbsc.co.uk



Options



PBSC Supplying bespoke
cleanroom solutions worldwide



The complete cleanroom
component manufacturer

INSTALLATION, WARRANTY AND AFTER-SALESCARE

PBSC employs a specialist team of highly-skilled engineers to ensure the highest standards of product installation. Preventative maintenance contracts can be quoted on request and are recommended. PBSC aim to dispatch major spare items of minimum notice. 1-year warranty is standard on all products.

Abbott-Murex
Actavis
AstraZeneca
Baxter
Bristol-Myers Squibb
Boehringer Ingelheim
GlaxoSmithKline

Intel
Intervet
Johnson & Johnson
Lilly
Lonza
Merck
MRC

NHS Hospitals
Novartis
Patheon
Pfizer
sanofi-aventis
Schering-Plough
3M Healthcare
Wyeth