



PBSC Ltd

Bradley Junction Industrial Estate, Leeds Road, Huddersfield HD2 1UR, UK

Phone: +44 (0)1484 354500

Fax: +44 (0)1484 354504

www.pbsc.co.uk



PBSC Ltd

Bradley Junction Industrial Estate, Leeds Road, Huddersfield HD2 1UR, UK

Phone: +44 (0)1484 354500

Fax: +44 (0)1484 354504

www.pbsc.co.uk



VISION PANELS

APPLICATIONS

Vision panels are essential in many potentially hazardous facilities where it is vital to see or be seen. The PBSC vision panel is to be found in many pharmaceutical, laboratory, biotech and NHS facilities. Offering a high quality, long-lasting system that is easy to clean with its flush finish. The PBSC vision panel can be made to bespoke measurements or to retro fit into existing buildings, as well as being available in standards sizes for new constructions.



DESCRIPTION

The standard PBSC viewing or vision panel provide your clean area with a fixing-free, flush, double-glazed unit made from polished stainless steel. When fully installed, the PBSC vision panel creates a seal between two areas that you will find visually acceptable in any environment.

As with PBSC doors, the vision panels combine a seamless frame with a full wrap-around architrave. There are no visible fixings, and sharp edges ensure no dirt can collect around the frame, thus reducing possible contamination.

Vision panels can be triple-glazed for fire-rating and can be fitted into cleanroom partition walls. In a recent development, you can now install PBSC vision panels complete with an ingenious magnetically-operated Venetian or blackout blind option.



KEY FEATURES

- Flush design, with double or triple glazing
- Made to suit virtually any wall thickness
- Stainless steel construction
- Two-part installation optional
- No visible fixings



PBSC Ltd

Bradley Junction Industrial Estate, Leeds Road, Huddersfield HD2 1UR, UK

Phone: +44 (0)1484 354500

Fax: +44 (0)1484 354504

www.pbsc.co.uk

NON-FIRE RATED VISION PANEL

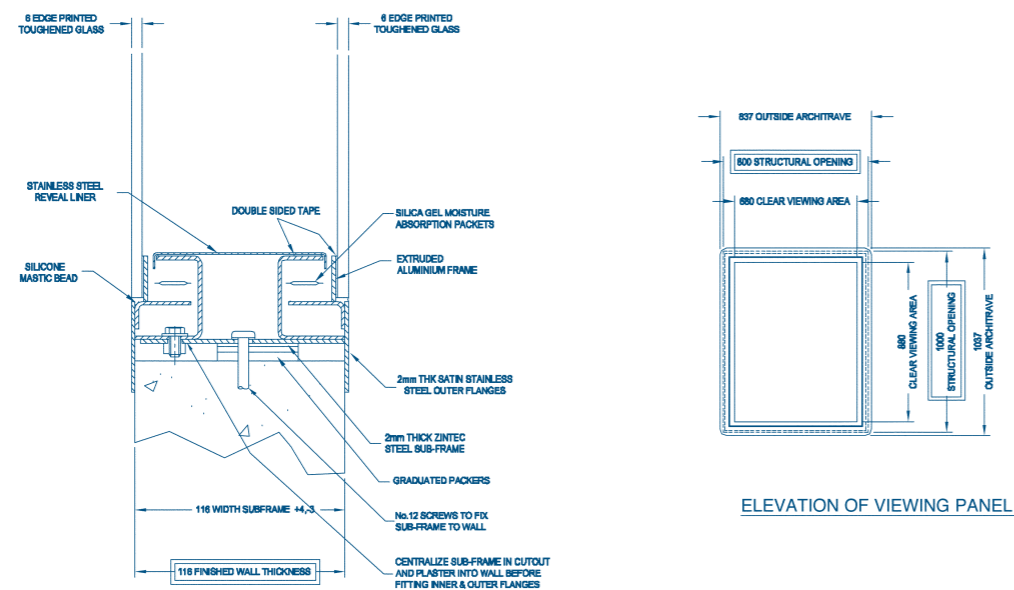
TECHNICAL DATA

Maximum Structural Dimensions	Clear Area	Glass Thickness	Wall Thickness	Construction
Height 1200mm Width 1200mm (above this a mullioned vision panel is an option)	Width 120mm less than structural Width, Height 120mm less than structural Height	6mm toughened to BS 6206A	80mm minimum to fit the double glazed vision panel	304 or 316 Stainless Steel in 240 finish

OPTIONS

- Mullion vision panels (over 1.2m wide)
- Mellophones systems
- Integrated magnetically-operated blinds
- Partition vision panel, specially designed to fit into standard cleanroom partition systems of 60mm wall thickness

CROSS SECTION DRAWING



SECTION THRO' VIEWING PANEL

FRAME MATERIAL : 304 GRADE STAINLESS STEEL WITH ZINTEC STEEL SUB-FRAME

ELEVATION OF VIEWING PANEL

FIRE RATED VISION PANEL (2 HOUR CERTIFIED)

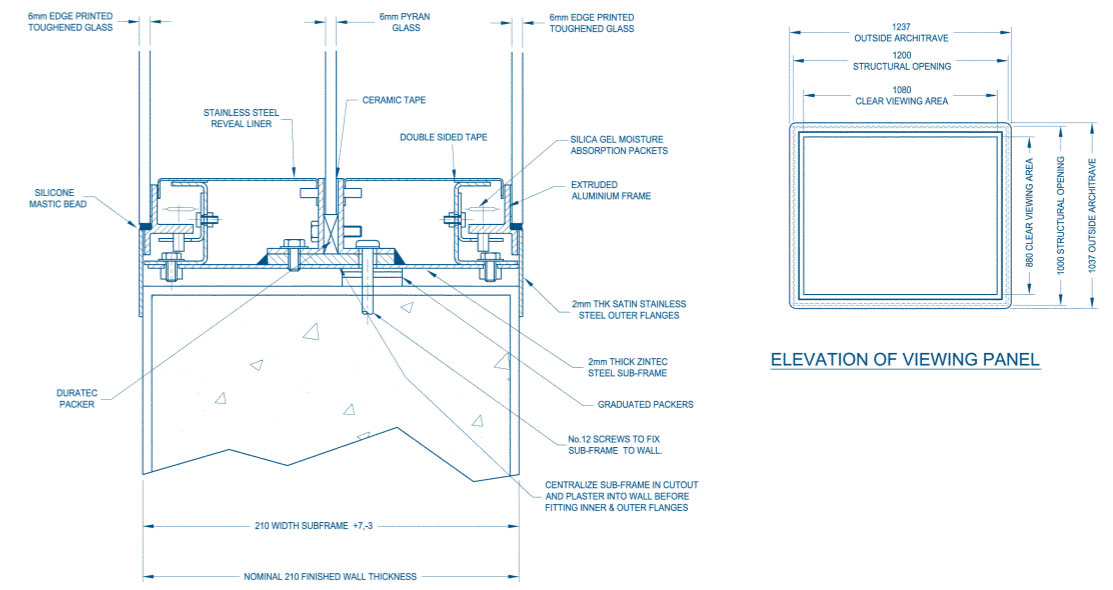
TECHNICAL DATA

Maximum Structural Dimensions	Clear Area	Glass Thickness	Wall Thickness	Construction
Height 1000mm Width 1200mm (above this a mullioned vision panel is an option)	Width 120mm less than structural Width, Height 120mm less than structural Height	6mm toughened to BS 6206A and 6mm Pyran Glass	170mm minimum to fit the triple glazed vision panel	304 or 316 Stainless Steel in 240 finish

OPTIONS

- Mullion vision panels (over 1.2m wide)
- Integrated magnetically-operated blinds
- Partition vision panel, specially designed to fit into standard cleanroom partition systems of 60mm wall thickness

CROSS SECTION DRAWING



SECTION THRO' VIEWING PANEL

FRAME MATERIAL : 304 GRADE STAINLESS STEEL WITH ZINTEC STEEL SUB-FRAME

ELEVATION OF VIEWING PANEL